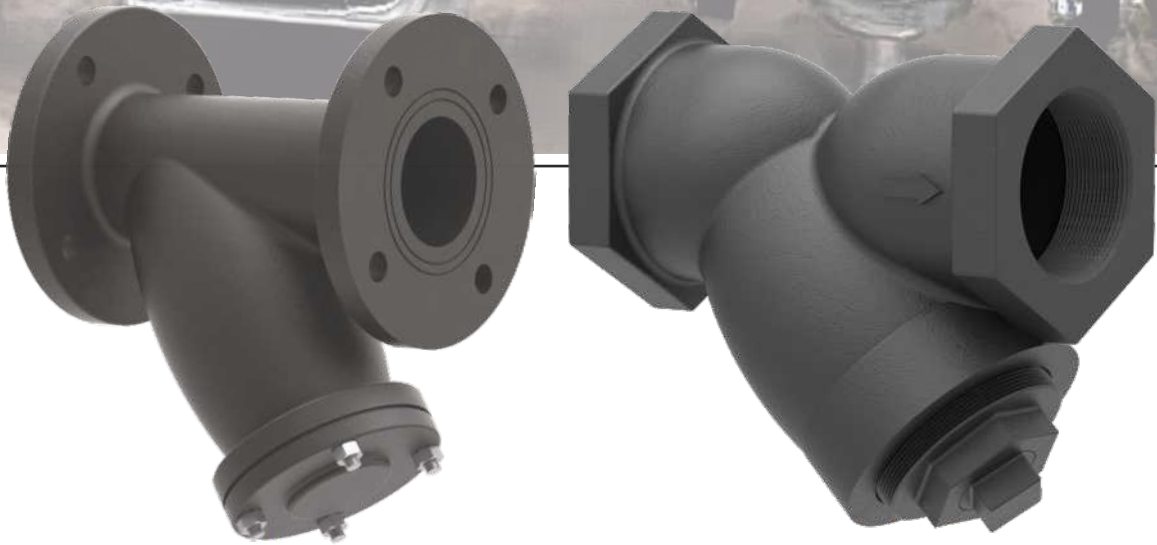


LFS & LTS

Y-Type Cast Iron Strainer



MAIN FEATURES

- It is particularly beneficial to filter / strain out particles from flowing liquid.
- They are useful anywhere clean liquid flow is required.
- We have increased the screen area of the mesh to achieve greater performance efficiency.
- We also provide a smooth interior surface which reduces wall friction losses and hence minimum pressure drop is achieved.
- All our valves are CED coated for better corrosion protection & long lasting life.



STANDARD

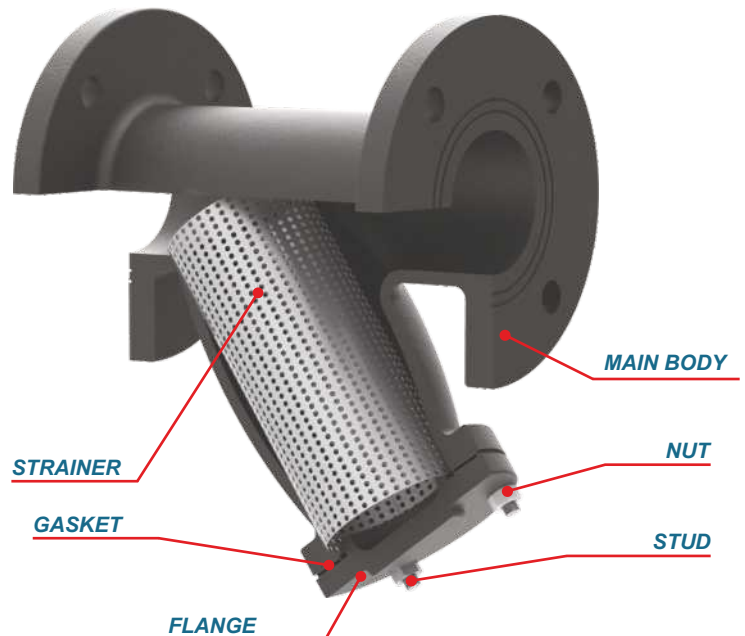
Design	ASME B16.34
Flanged Ends	PN10 / PN16 / BS 10 Table F / NSI - (optional)
Face to Face Dimensions	ASME B16.10
Testing	ISO5208 / API598 / EN 12266

PRESSURE TESTS

Hydrostatic Shell Test	24 bar (350 psi)
Maximum Working Pressure	16 bar (230 psi)

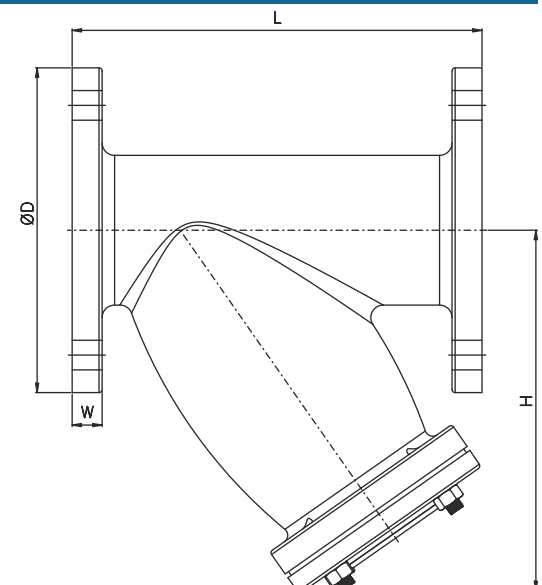
MATERIAL SPECIFICATIONS

Part Name	Material	Specification
Main Body	Cast Iron	Grade F.G.200
Flange	Cast Iron	Grade F.G.200
Strainer (Mesh)	Stainless Steel	AISI 304
Gasket	Nitrile Rubber	NBR
Stud	M.S.	Zinc Plated
Nut	M.S.	Zinc Plated



SIZE / DIMENSIONS

Model	Size (mm)	Size (Inches)	L*	W	H	D
LFS20	50	2	180	19	175	165
LFS25	65	2-1/2	206	19	180	184
LFS30	80	3	260	19	238	203
LFS40	100	4	295	22	250	229
LFS60	150	6	385	25.4	320	305
LFS80	200	8	525	28.6	395	368
LFS100	250	10	700	28.6	515	432
LFS120	300	12	750	31.8	570	489



Note: All Dimensions are in mm unless mentioned otherwise.

* This dimension shall have a tolerance of ± 2 mm.

MAIN FEATURES

- It is particularly beneficial to filter / strain out particles from flowing liquid.
- They are useful anywhere clean liquid flow is required.
- We have increased the screen area of the mesh to achieve greater performance efficiency.
- We also provide a smooth interior surface which reduces wall friction losses and hence minimum pressure drop is achieved.
- All our valves are CED coated for better corrosion protection & long lasting life.



STANDARD

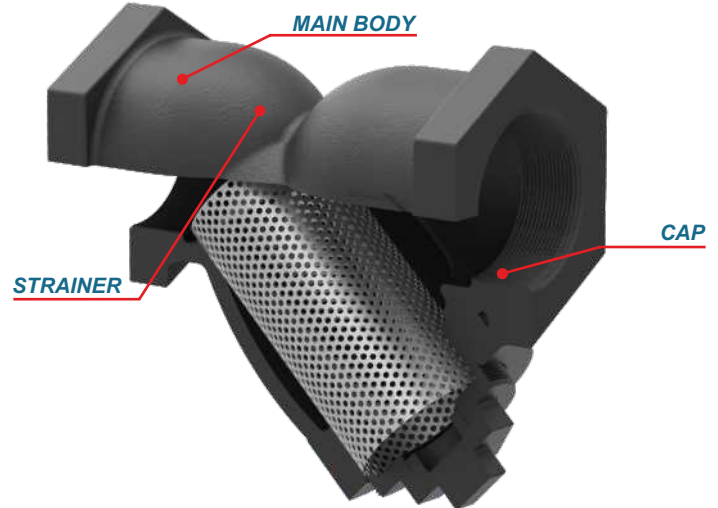
Design	ASME B16.34
Threaded Ends	BS Standard / NPT - (optional)
Testing	ISO5208 / API598 / EN 12266

PRESSURE TESTS

Hydrostatic Shell Test	24 bar (350 psi)
Maximum Working Pressure	16 bar (230 psi)

MATERIAL SPECIFICATIONS

Part Name	Material	Specification
Main Body	Cast Iron	Grade F.G.200
Strainer (Mesh)	Stainless Steel	AISI 304
Cap	Cast Iron	Grade F.G.200

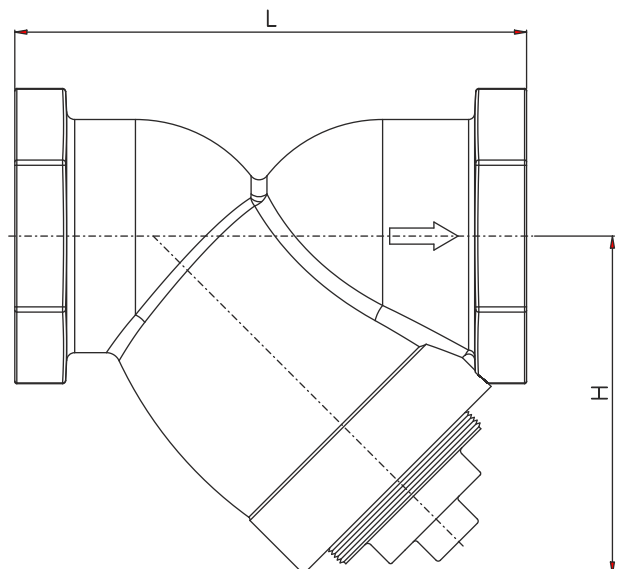


SIZE / DIMENSIONS

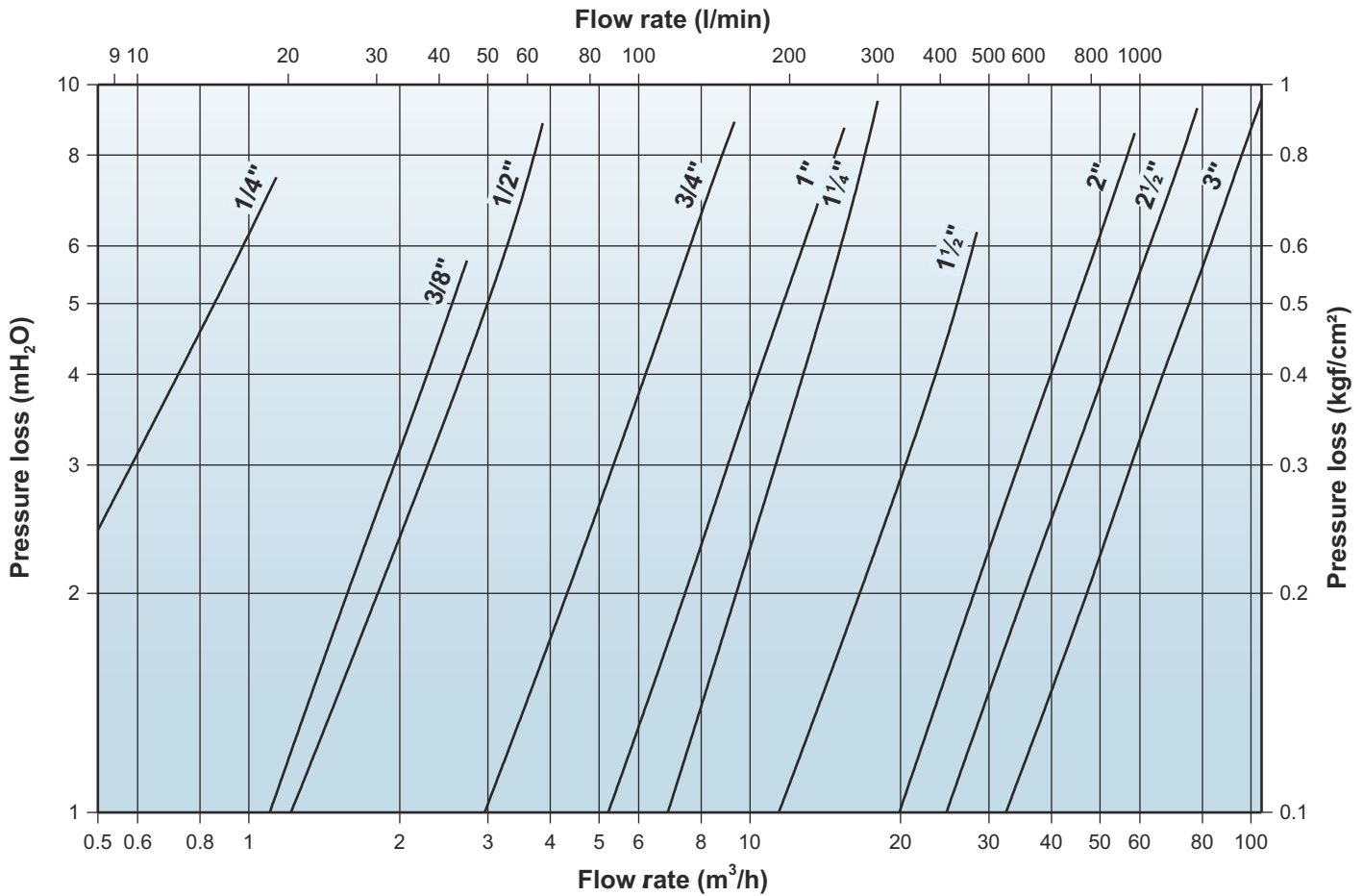
Model	Size (mm)	Size (Inches)	L*	H
LTS02T	6	1/4	68	55
LTS03T	9	3/8	68	55
LTS05T	13	1/2	77	62
LTS07T	19	3/4	104	77
LTS10T	25	1	124	92
LTS12T	32	1-1/4	131	99
LTS15T	40	1-1/2	147	104
LTS20T	50	2	188	140
LTS25T	65	2-1/2	228	147
LTS30T	80	3	255	175

Note: All Dimensions are in mm unless mentioned otherwise.

* This dimension shall have a tolerance of ± 2 mm.



Y-Type Cast Iron Strainer (Threaded) - PRESSURE DROP CHART



LUBI INDUSTRIES LLP

Near Kalyan Mills, Naroda Road, Ahmedabad-380 025, INDIA.

Phone : +91 - 79 - 61700100, Fax No. :+91 - 79 - 61700399.

Sales Enquiries: sales@lubivalves.com,

www.lubivalves.com

Product Improvement is a continuous process at 'LUBI'. The data given in this publication is therefore subject to revision.

00.00.091120.0203



ISO 9001



ISO 14001

Customer Care Number : 09824200800